



SRI TRANGTM
GLOVES

「Touch Of LifeTM」

SET AWARDS 2024

SUSTAINABILITY EXCELLENCE

SRI TRANG GLOVES (THAILAND) PUBLIC COMPANY LIMITED

9th September 2024



Corporate Governance and Sustainable Development Committee



Gen. Bundit Boonyapan

Independent Director

Chairman of Corporate Governance and Sustainable Development Committee



Ms. Jarinya Jirojkul

Chief Executive Officer

Member of Corporate Governance and Sustainable Development Committee



Ms. Thanawan Sa-ngiamsak

Chief Financial Officer

Member of Corporate Governance and Sustainable Development Committee



Mr. Vitanath Sincharoenkul

Chief People Development and Transformations Officer

Member of Corporate Governance and Sustainable Development Committee

Agenda



1

Our Strategic Challenge

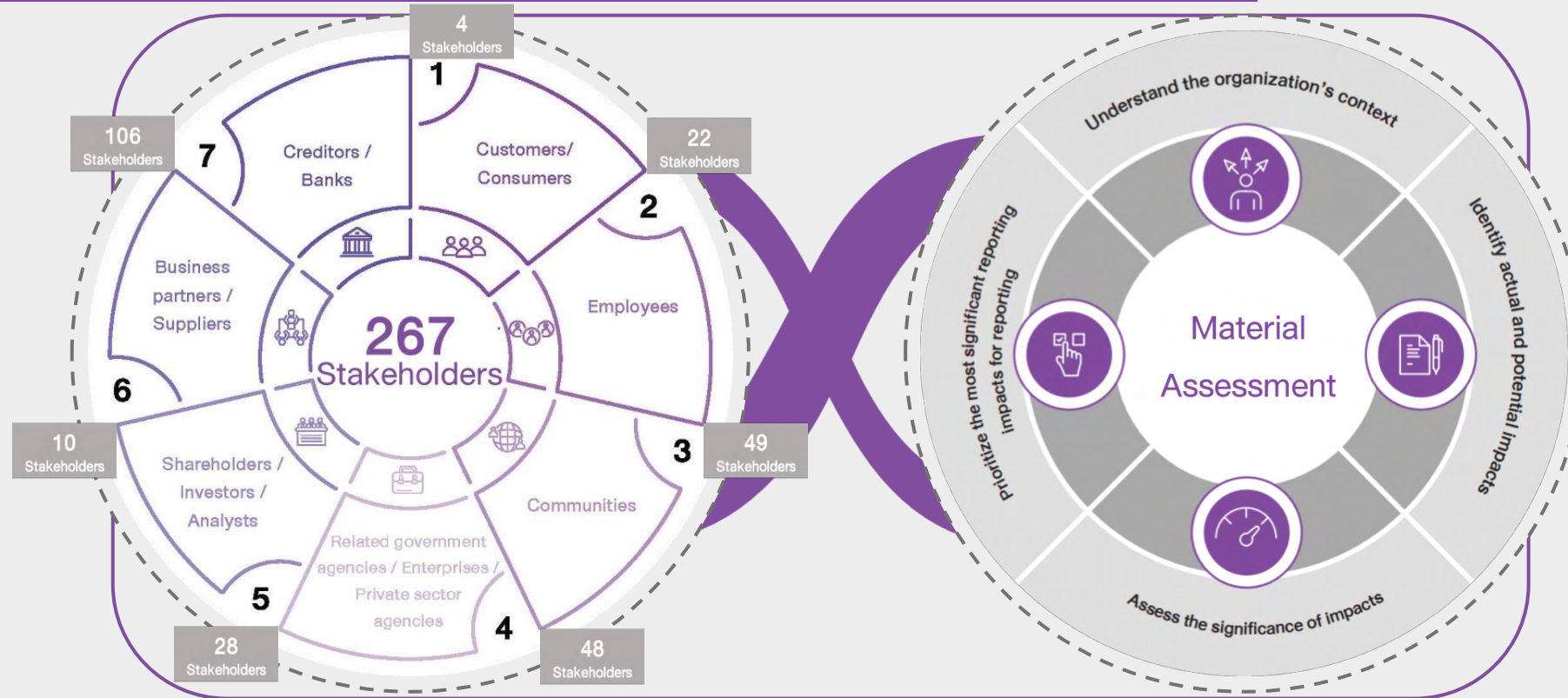


- Supply Chain Management
- Climate Change
- Labor and Human Rights

2

Appendix: Company Overview





Governance Dimension

- 1) Good Corporate Governance and Anti-Corruption
- 2) Risk Management and Business Continuity
- 3) Sustainable Management of Supply Chain
- 4) Research, Development and Innovation



Social Dimension

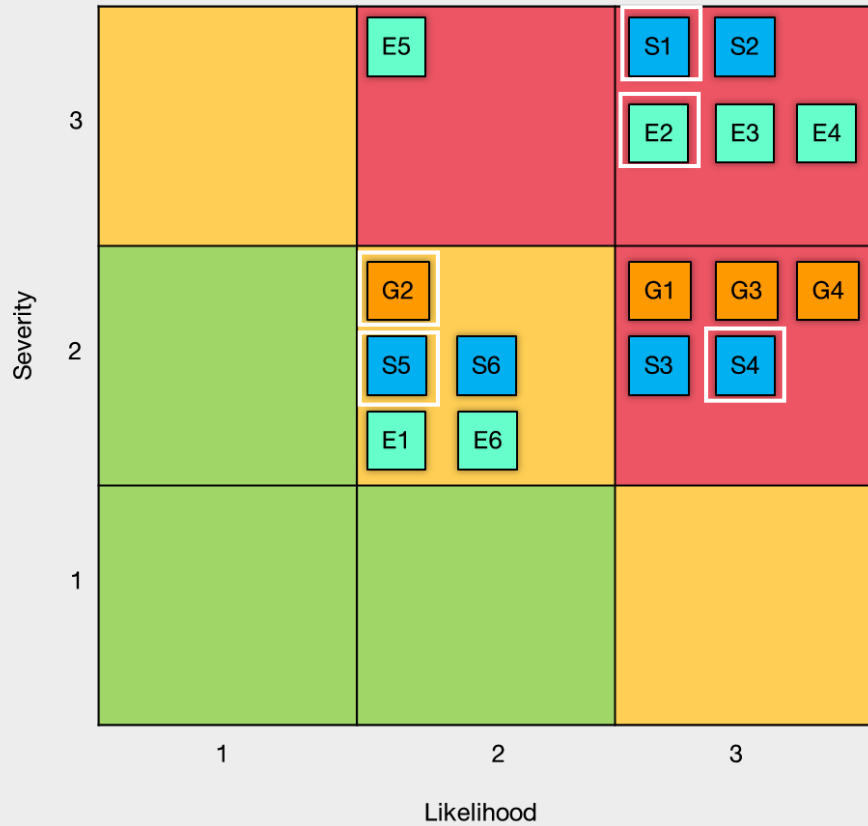
- 1) Occupational Health and Safety in the Workplace
- 2) Quality and Safety of Products
- 3) Caring for and Developing Employees' Skills
- 4) Human Rights and Non-Discrimination
- 5) Support and Participation with the Community
- 6) Customers and Consumers Responsibility



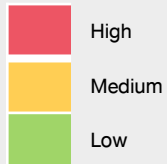
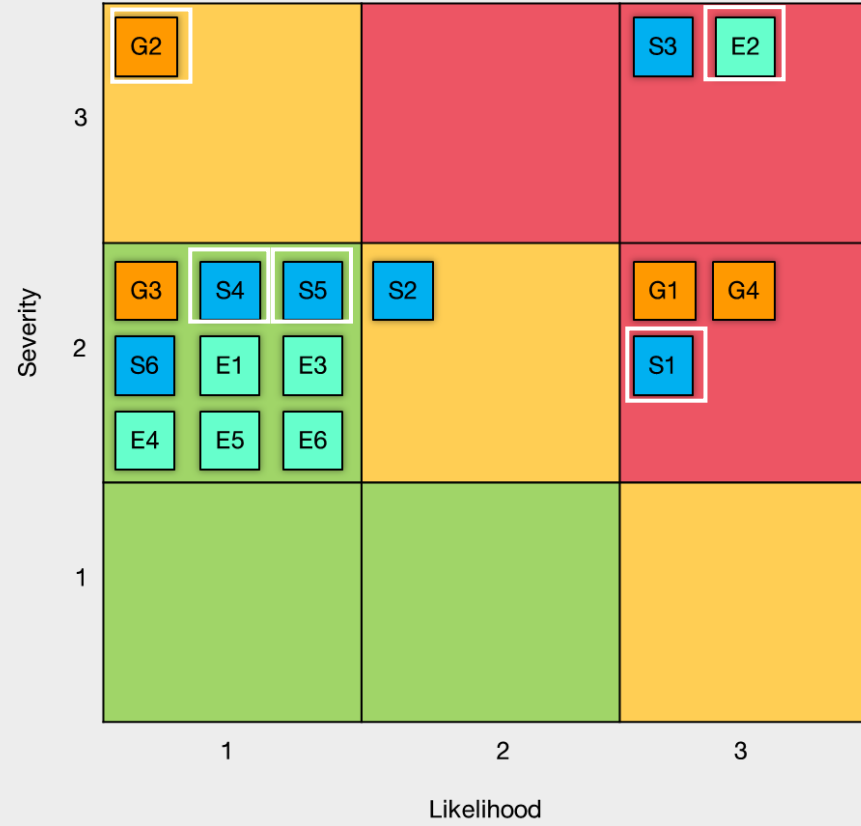
Environment Dimension

- 1) Reducing Greenhouse Gas Emissions and Energy Management
- 2) Water and Effluent Management
- 3) Management of Waste and Unused Materials
- 4) Environmental Management Systems
- 5) Consideration of Ecosystems and Biodiversity
- 6) Air Quality Management

Positive Impact Level



Negative Impact Level



Governance Dimension

- G1 Good Corporate Governance and Anti-Corruption
- G2 Sustainable Management of Supply Chain
- G3 Research, Development and Innovation
- G4 Risk Management and Business Continuity



Social Dimension

- S1 Occupational Health and Safety in the Workplace
- S2 Caring for and Developing Employees' Skills
- S3 Quality and Safety of Products
- S4 Human Rights and Non-Discrimination
- S5 Support and Participation with the Community
- S6 Customers and Consumers Responsibility



Environmental Dimension

- E1 Water and Effluent Management
- E2 Reducing Greenhouse Gas Emissions and Energy Management
- E3 Management of Waste and Unused Materials
- E4 Environmental Management Systems
- E5 Air Quality Management
- E6 Consideration of Ecosystems and Biodiversity



“CLEAN WORLD CLEAN GLOVES”

is our brand promise to give priority to the sustainability-minded operations and production of high-quality, environmentally friendly gloves

Sustainable sourcing

Logistic management

Environmentally-friendly manufacturing

Human dignity and social responsibility

Clean optimization

Clean natural product

Sustainability for Supply Chain and Fair Trade

STGT focuses on sustainable supply chain management in accordance with international standards.



Human Rights

We value our employees as part of STGT family. We are committed to no child labor and no forced labor policy.



Animal Welfare

STGT is committed to advancing animal welfare in Thailand through its Touch Of Life™ initiative, providing love and support to stray animals and wildlife through CSR activities.



Responsibility & Sharing

STGT produce highest quality gloves and deliver our products under Touch Of Life™ mindset for customers throughout the world. STGT promote our sharing engagement to our society and a better world.



Environmentally Friendly Technologies

STGT is proud of our ecological biomass energy, promoting renewable energy, including waste management according to the principle of Circular Economy and moving towards green factory which is friendly to environment as well as communities around us.



- The Environment**
- ✔ Reducing greenhouse gas emissions per product unit by 40% within 2026 compared to 2021 (base year)
 - ✔ Carbon Neutral by 2030 and Net Zero by 2050
 - ✔ Reducing total energy consumption per product unit by 5.5 % within 2024 compared to 2019 (base year)
 - ✔ **Reducing electricity consumption per product unit by 10% within 2024 compared to 2019 (base year)**
 - ✔ Reducing water consumption per product unit by 10% within 2024 compared to 2019 (base year)
 - ✔ **Reducing waste per product unit by 20% within 2024 compared to 2019 (base year)**
 - ✔ Reducing the amount of non-hazardous waste from the production process that is disposed in landfills to 0 by 2030



- Social**
- ✔ Zero number of fatal accidents from work.
 - ✔ Zero number of occupational illnesses for all workers
 - ✔ The customers and consumers satisfaction equals 80%
 - ✔ The employees' satisfaction greater than 85% (The proportion of employees who respond to the assessment greater than or equals 85% of all employees)
 - ✔ 40 hr/person/year of training hours average

RELATIONSHIP WITH 7 GROUP OF STAKEHOLDERS

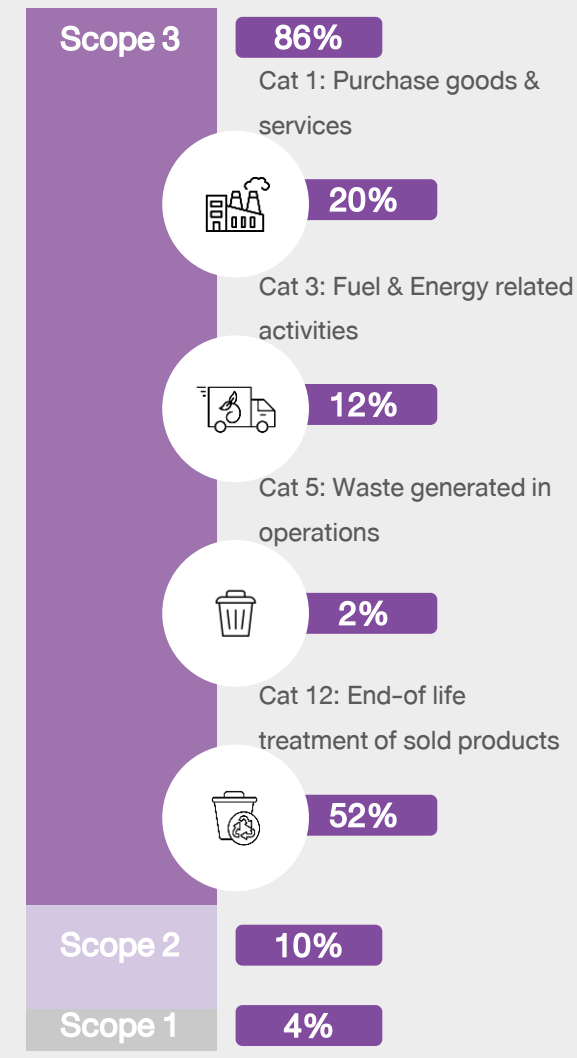
CORPORATE GOVERNANCE AND SUSTAINABLE DEVELOPMENT COMMITTEE AND CORPORATE SUSTAINABILITY POLICY



- Tier 1 Suppliers: 1,490 suppliers
- Significant Suppliers in Tier1 : 155 suppliers



Export to more than
175
 countries



Low Carbon Production



100% Biomass Renewable Energy
Utilization for Thermal Energy



Low carbon production

	Biomass Wood chip Biomass Energy	Natural Gas	LPG	Coal (Anthracite)
Amount (Kg)	62,539	20,833	19,912	31,847
MJ/Unit (MJ)	15.99	48.0	50.22	31.40
Emission Factor (kgCO ₂ eq/Unit)	0.0304	2.6976	3.1134	3.1000
CF (kgCO ₂ eq)	1,901	56,200	61,995	98,726

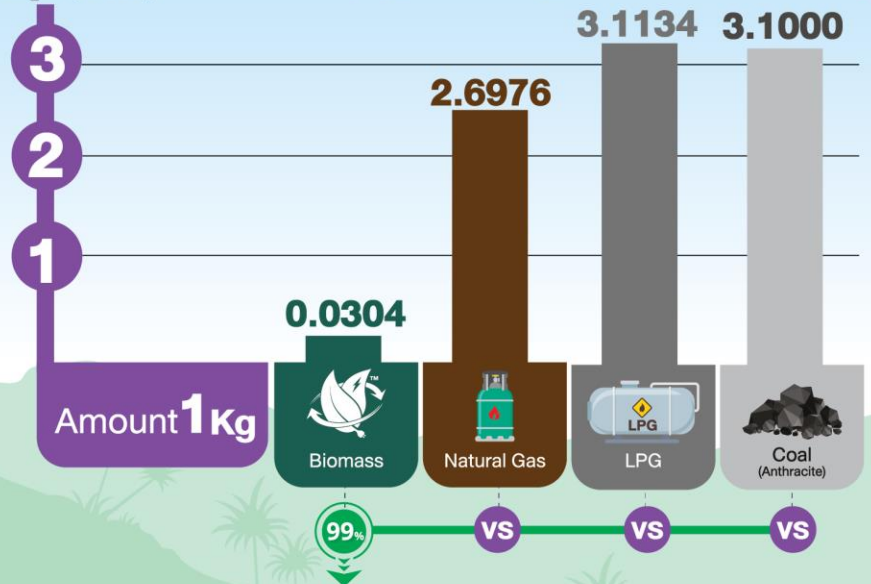
Higher CO₂ Emission by VS Biomass

2,856% **3,161%** **5,093%**

Compare Using **1,000,000 MJ** Heating value

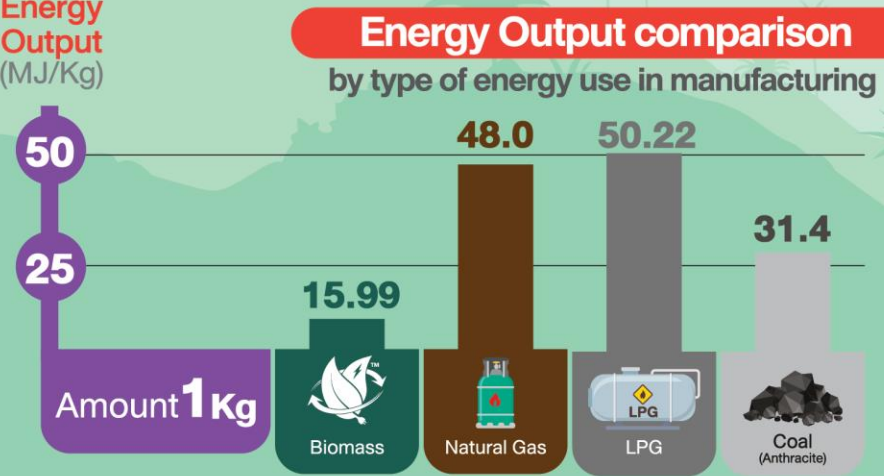
Source : ① The Energy Policy and Planning Office (EPPO), Thailand,
② 2006 IPCC Guidelines for National Greenhouse Gas Inventories,
③ Thailand Greenhouse Gas Management Organization (Public Organization) (TGO)

Emission Factor
(kgCO₂ eq/Unit)




Source : ① 2006 IPCC Guidelines for National Greenhouse Gas Inventories
② Thailand Greenhouse Gas Management Organization (Public Organization)(TGO)

Energy Output
(MJ/Kg)



Source : ① The Energy Policy and Planning Office (EPPO), Thailand
② 2006 IPCC Guidelines for National Greenhouse Gas Inventories

No.	Categories	GHG Emissions (TonCO ₂ eq)			
		STGT 	Peer "A"	Peer "B"	Peer "C"
1	Purchased goods and services	259,565	x	x	x
2	Capital goods	x	x	x	x
3	Fuel- and energy related activities	161,297	x	x	x
4	Upstream transportation and distribution	10,210	x	x	x
5	Waste generated in operations	28,005 ¹	1,469 ²	x	1,826 ³
6	Business travel	98 ⁴	410 ⁵	5,383 ⁸	70 ⁶
7	Employee commuting	x	3,057 ⁷		3,409 ⁹
8	Upstream leased assets	x	x	x	x
9	Downstream transportation and distribution	132,332	x	x	x
10	Processing of sold products	x	x	x	x
11	Use of sold products	x	x	x	x
12	End-of-life treatment of sold products	691,038	x	x	x
13	Downstream leased assets	x	1,097	x	x
14	Franchises	x	x	x	x
15	Investments	x	x	x	x



Remark: Purple rectangle cover scope 3 which is significantly disclosed in STGT's Sustainability Report 2023 / 1 Data covers all landfill waste / 2 Data covers all types of scheduled wastes only / 3 Data covers both scheduled and non-scheduled waste / 4 Data covers car and flight / 5 all type of vehicles except for trains / 6 Data covers all vehicles except trains / 7 Data covers staff commuting about 40% and 100% for worker / 8 Data covers indirect emissions generated by employee commuting and business travel (flight) / 9 Data covers all employee commuting activities



Highly competitive business, competing both with major manufacturers and distributors in the same product category:

Possibility Impact from Risk

- Disadvantages in cost competition and sale volume
- Losses of market share and does not achieve the regulatory
- Decreases the company's profit and does not reach the target as expected

Mitigating Action Plan

- Consistently researches and develops to compete, investing in human capital, advancing production technology, and staying attuned to global market needs
- Expands the product line and increases in finding customer to create new market opportunities and potential for additional company revenue
- Considers the application of technology as artificial intelligence (AI) into the production process to improve efficiency

Output

 **Sustainable Sourcing**



Traceable and Environmental Sourcing: EUDR & FSC



Circular Partnership Development: Packaging



Waste Management by Circular Economy

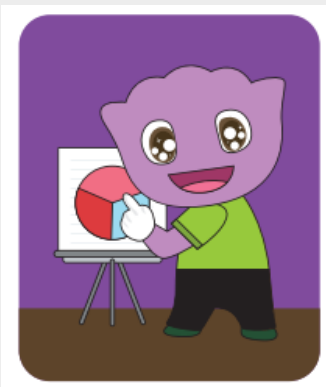


Enhanced Production Performance by Technology

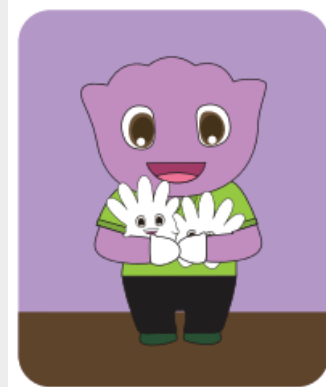
The guidelines for business partners are divided into 4 areas, summarized as follows:



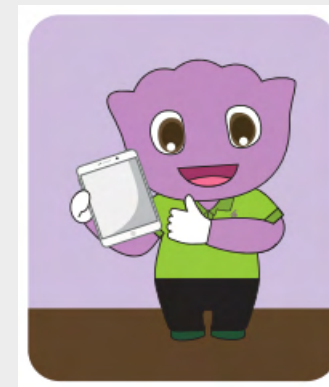
The Company has assessed the risks that may arise from **significant suppliers** that may potentially affect the operations of the organization, thereby allowing for proper management. The Company has grouped significant suppliers (key partners) based on the following criteria:



Scale: suppliers with **high trading volume** (divided by business group)



Importance: suppliers who **supply raw materials, products and provide services** that are important to the Company's business processes



Scratching: suppliers whose raw materials, products and services under **the limited number of providers**



Target

Performance

Suppliers were communicated Supplier Code of Conduct and Guideline **100%**

Suppliers signed acknowledgement Supplier Code of Conduct and Guideline **100%**

Suppliers completed the Environmental, Social and Governance (ESG) self-assessment questionnaire **100%**

Suppliers were assessed for environment, social and governance (ESG) risk in their operating sites **100%**

100%
target achievement
for 2022&2023

STGT is Ready for EUDR...

#ศรีตรังพร้อมรับ
EUDR

ยางมีพิกัด (GPS)
#แฮร์โลยง #ศรีตรังเพื่อนชาวสวน

Traceable (GPS)
Natural Rubber

“ Recognizing EUDR as an opportunity for both STGT and Thailand. ”



Cocoa & Chocolate



Rubber & Wood



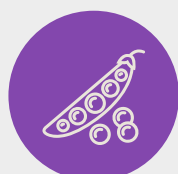
Coffee



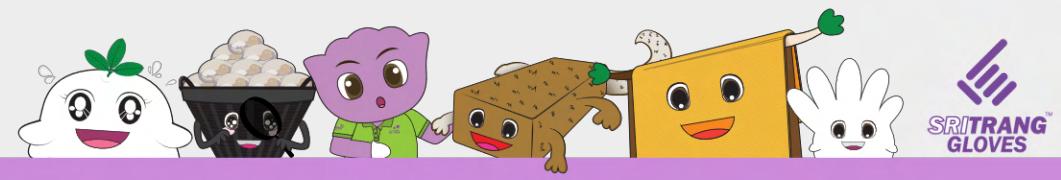
Palm Oil



Cattle & Beef



Soy



Effective 30 Dec 2024, EUDR requires 7 commodities and certain specified products made from them must be “deforestation-free” for export to the EU.

- Deforestation-free (cut-off date after 31 Dec 2020)
- Products must adhere to the laws of their country of origin
- Covered by a due diligence statement



STGT is ready for the new mega trend of Traceability & Sustainability. Many companies strongly require natural rubber to be traceable to source of origin as they are required proof to comply with EUDR by implementing traceability, we therefore has better chance to secure sales volume and possible premium since 2024.



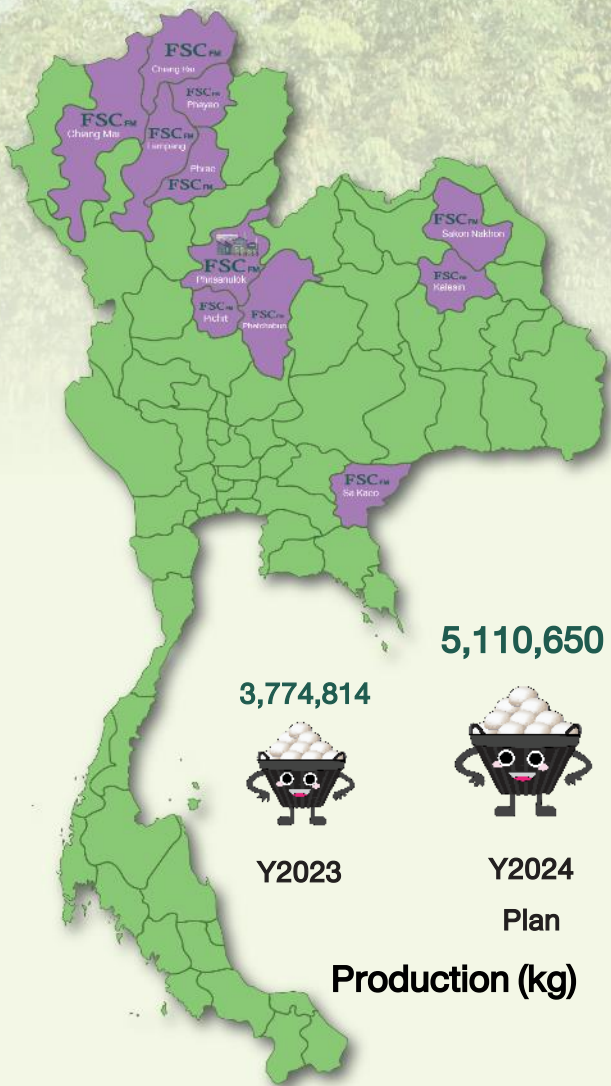
Thailand's largest FSC Rubber producer



FSC certification: sustainable forest management



FSC® Search



4,500 hectare

In 11 provinces

(as of 31 August 2023)

- Phitsanulok
- Chiang Rai
- Chiang Mai
- Lampang
- Pichit
- Phrae
- Pha Yao
- Sa Kaeo
- Sakon Nakhon
- Petchabun
- Kalasin



*Phitsanulok



FSC STR Production

*This estimate is based on the monthly yield.
*The accumulated stock is excluded from this calculation.

Pioneer in fully integrated FSC latex supply chain



The key differences between the EU Deforestation Regulation (EUDR) and the Forest Stewardship Council (FSC)



EUDR (EU Deforestation Regulation)

To ensure that products traded and consumed in the EU do not contribute to deforestation and forest degradation through **regulations**



European Union, but with global implications for companies exporting to the EU and Companies can **use credible** voluntary systems like **FSC to meet EUDR requirements**

Companies must conduct due diligence to ensure products are not sourced from deforested or degraded land **after December 31, 2020**

Mandatory: Enforced by EU Competent Authorities using tools like satellite monitoring and analysis

Implementation Date

Entered into force on **June 29, 2023**, with rules applicable from **December 30, 2024**

Considerations

Focuses on preventing deforestation and forest degradation, includes human rights, environmental considerations, etc.


Purpose

Scope

Focus and Alignment

Key Requirements

Enforcement



FSC (Forest Stewardship Council)

To promote responsible management of the world's forests through **certification standards**

Applies to forest management and chain of custody for forest products

Global, with certification applicable worldwide and FSC certification **can help meet EUDR requirements** but does not exempt companies from due diligence

Certification requires adherence to FSC standards for sustainable forest management and chain of custody

Voluntary: Enforced by accredited certification bodies that audit compliance with FSC standards

Implementation Date

FSC certification has been in place since 1993, with ongoing updates to standards

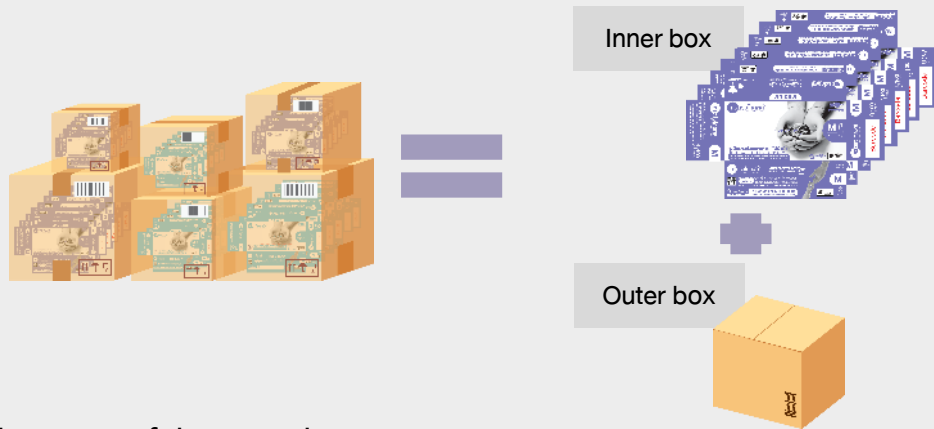
Considerations

Emphasizes sustainable forest management, biodiversity conservation, productivity and social benefits

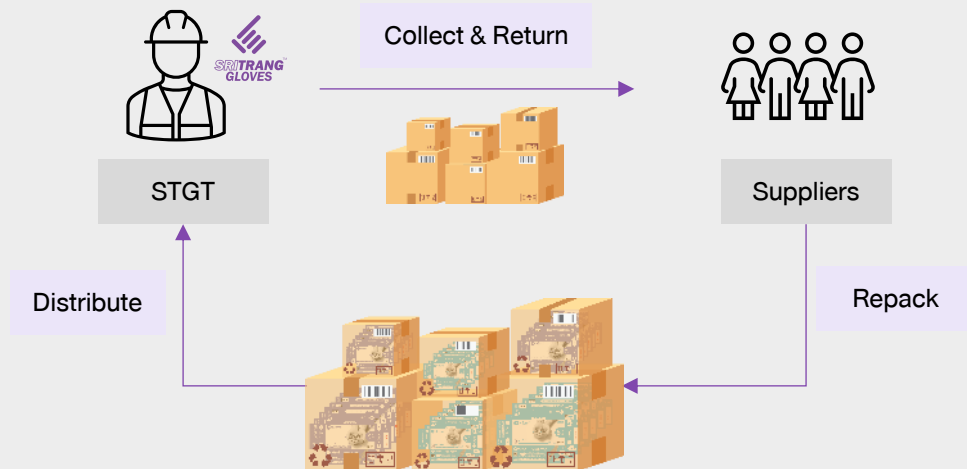
Remark: STGT is certified already with FSC™ COC

Impact to Partnership Development

Normally, the suppliers must pack a inner box (Dispenser) into a outer box/brown paper box (Carton); (“reusable box”)



Upon use of the outer boxes



Before



1.46 million boxes
= 416 tons

Performance

1.29 million boxes
= 540 tons

After

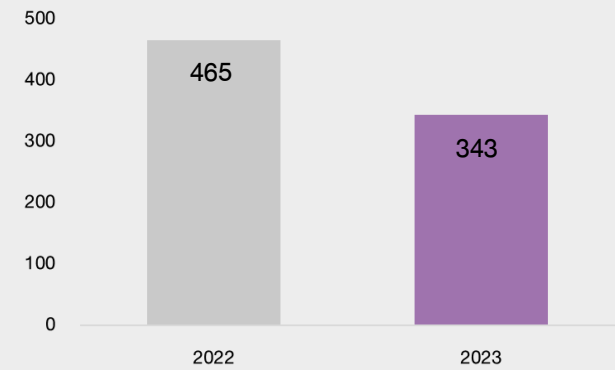


0.73 million boxes
= 206 tons

0.61 million boxes
= 255 tons



Circulation “Revolving box”



GHGs Emission Reduction (TonCO₂eq/year)

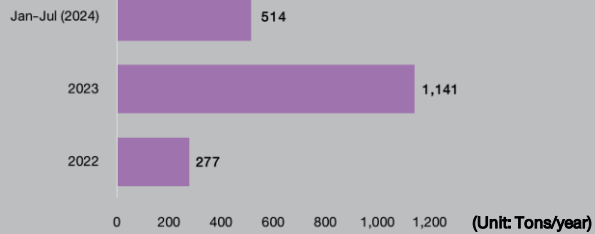
Waste Management by Circular Economy: Cost and Impact Reduction Waste to landfill



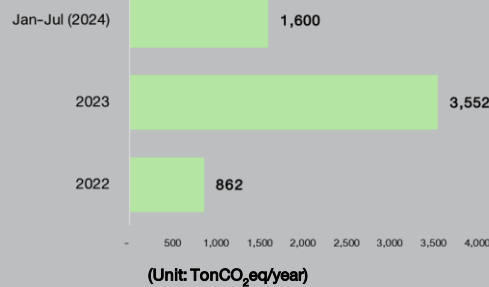
Continuous project since 2022:



Reduce the amount of **waste to landfill**



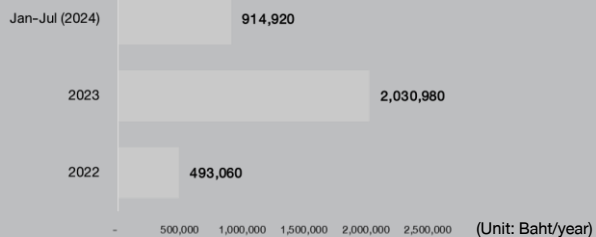
GHGs Emission Reduction



Equivalent to the absorption of GHG by perennial plant



Resulted in a disposal **cost reduction**

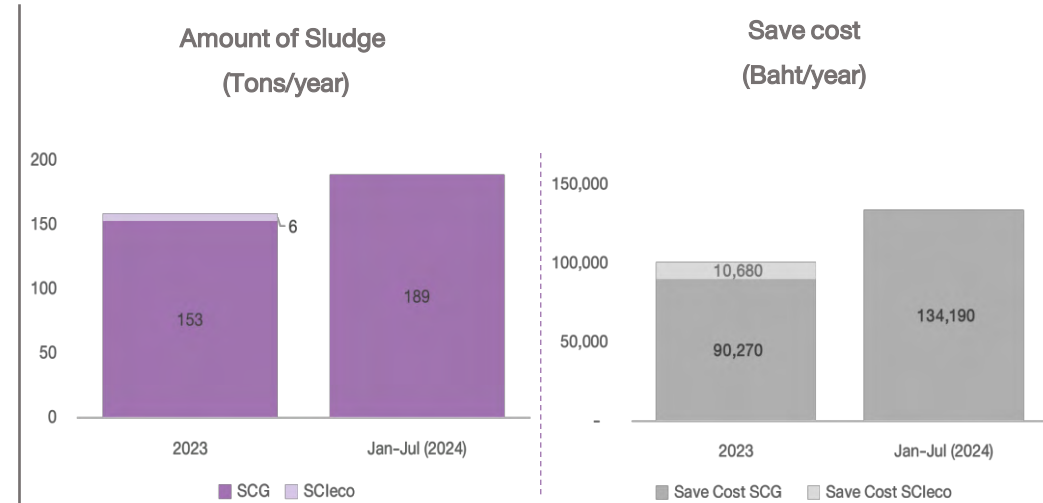




Sludge from wastewater treatment disposal



- Substituted Material for RDF for SCleco
- Use as co-material in cement kiln for SCG

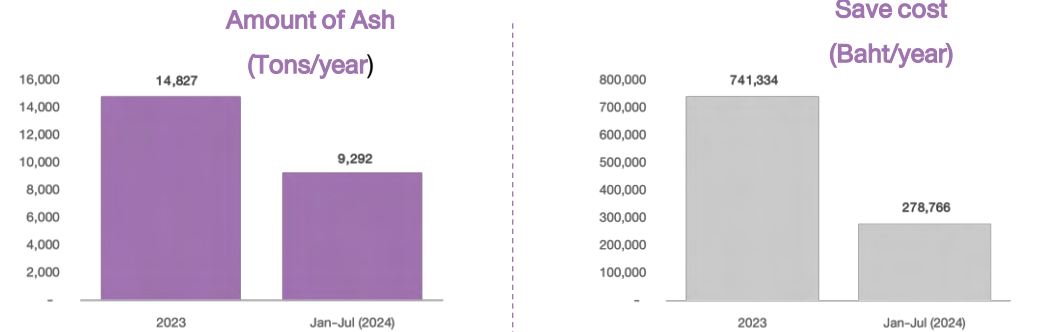


Before R&D with SCG and all Ash are disposal by landfill

Ash



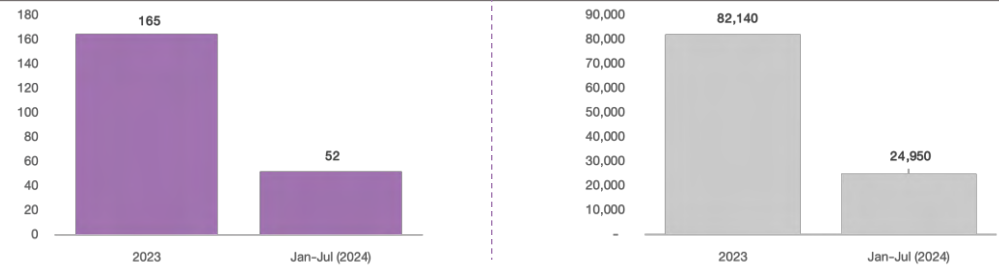
Alternative Raw material for SCG



Fly Ash

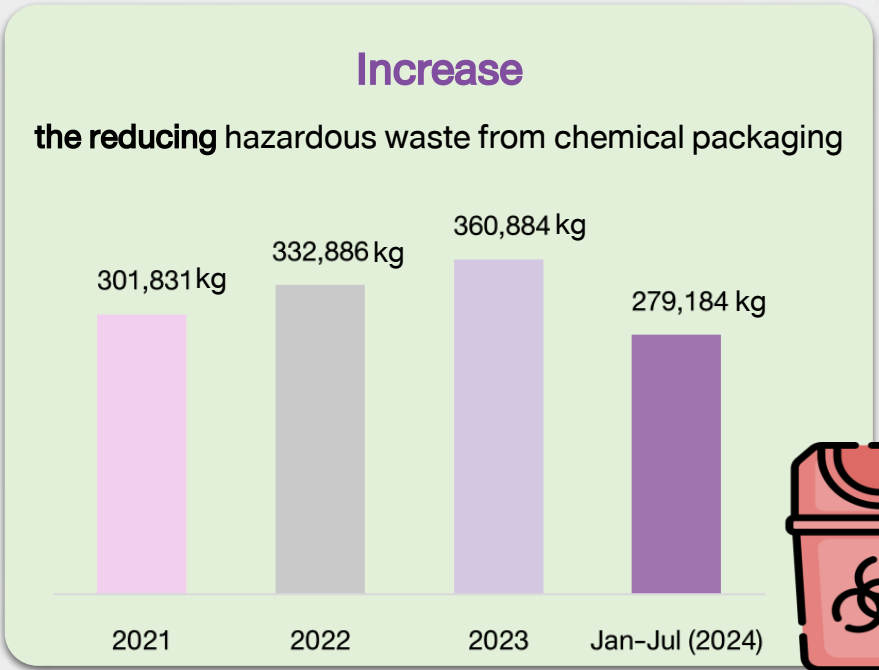


Raw material for Saint-Gobain



Continuous project since 2021

Change the Chemical Container



Sorting Waste from Operations

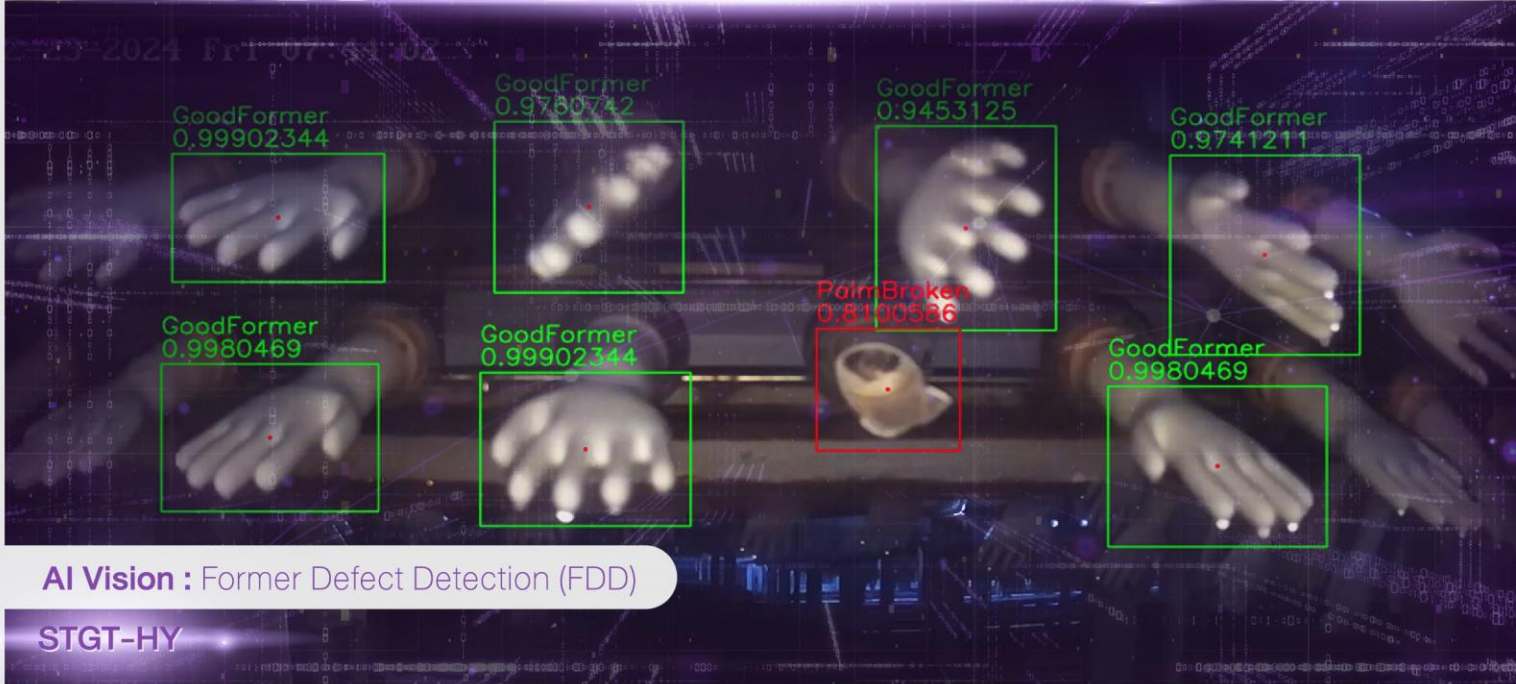


Substituted Material for RDF

Technology Enhance Production Performance




AI Vision : Glove Defect Detection (GDD)
STGT-SR



 Incredible Performance

The industry leading machine is able to reach record outputs of more than **50,000 pieces** of high quality medical gloves per hour



 Automation and IOT

Highly **Automated & Digitalized** process and **Warehouse** improve accuracy and quality management.



 Expert in Production

More than **30 years** experiences in designing state-of-the-art gloves production process.



 100% Biomass Energy

Low carbon production technology using Renewable energy source, lower Carbon emission



 Quality Control

Stringent QC process from certified ISO 17025 complied to worldwide standard.



 R&D

World leading R&D **experties** in Rubber industry. Highly experiences in Developing Raw material compound that are suitable for producing high quality Examination gloves



Surveying Process

Responsiveness Achievement



Opportunities

Challenges

Improved Environmental Performance: Ensures suppliers minimize environmental impact, leading to a more sustainable supply chain

Enhanced Social Responsibility: Ensures fair labor practices, safe working conditions, and respect for human rights, improving the overall social impact

Stronger Governance Practices: Ensures suppliers adhere to ethical business practices, reducing the risk of corruption and fraud

Risk Reduction: Identifying and mitigating ESG risks early can prevent potential disruptions and liabilities, leading to a more resilient supply chain

Stakeholder Trust: Demonstrating a commitment to ESG principles can build trust with stakeholders, enhancing the company's reputation and long-term success

Increased Operational Costs: Implementing comprehensive ESG assessments can be costly, requiring resources for monitoring, reporting, and compliance

Supplier Pushback: Some suppliers may resist ESG assessments due to perceived additional burdens or costs, potentially leading to strained relationships or loss of suppliers

Complexity and Variability: ESG standards can vary widely across regions and industries, making it challenging to implement a uniform assessment process

Data Reliability: Relying on self-reported data from suppliers can lead to inaccuracies or misrepresentations, necessitating additional verification efforts

Implementation Challenges: Integrating ESG assessments into existing supply chain processes can be complex and time-consuming, requiring significant changes to workflows and systems

Agenda



1

Our Strategic Challenge

- Supply Chain Management
- Climate Change
- Labor and Human Rights

2

Appendix: Company Overview



Company Impact on Climate Change (Inside-Out)

- > Greenhouse Gas Emissions
- > Non-Renewable Energy Usage
- > Water Scarcity
- > Waste Generation
- > Deforestation



Climate Change Impact on Company (Outside-In)

- > Supply Chain Disruptions
- > Energy Costs
- > Regulatory Compliance
- > Reputation and Market Demand
- > Operational Risks

Natural resource and climate change, and environment issue and new regulations to support the conservation of environment and weather:

Possibility Impact from Risk

- Makes result in business interruption, property damage, and employee safety
- Effects insufficiency of main raw materials
- Causes the company to lose business opportunities from non-compliance

Mitigating Action Plan

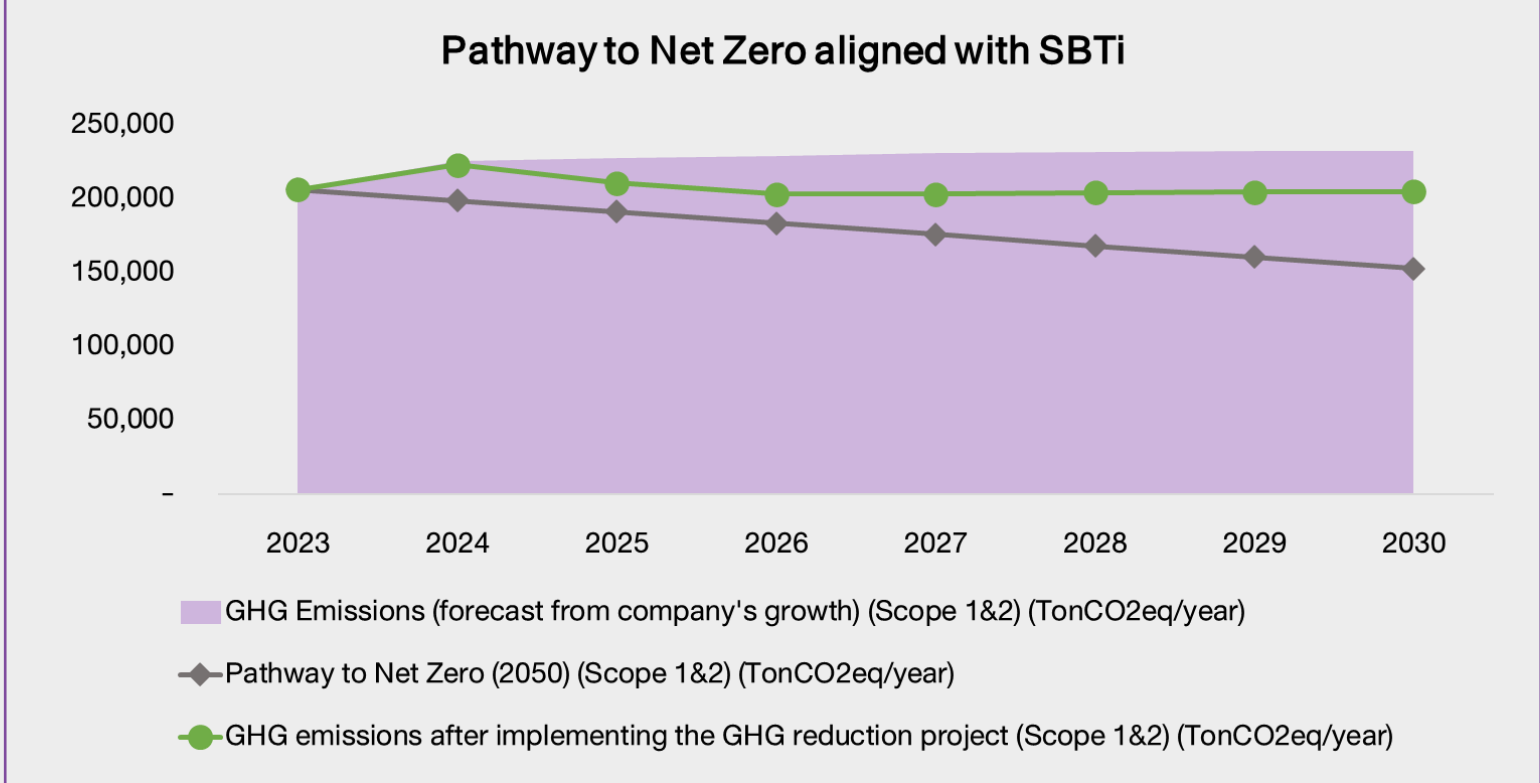
- Establish policies and operational frameworks as a mechanism
- Modify work processes and use alternative energy
- Join the project or a member which related to
- Follow up on operations, review strategies and targets for reducing greenhouse gas emissions, and continually improve operations to be consistent with policies, rules, and regulations.

Output

Carbon Footprint Products (CFP)
44 Products

Carbon Footprint Organizations (CFO)

“Organization Leader in Greenhouse Gas Management”



Climate Change Ambition Pathway (Scope 1&2): How Are We Doing



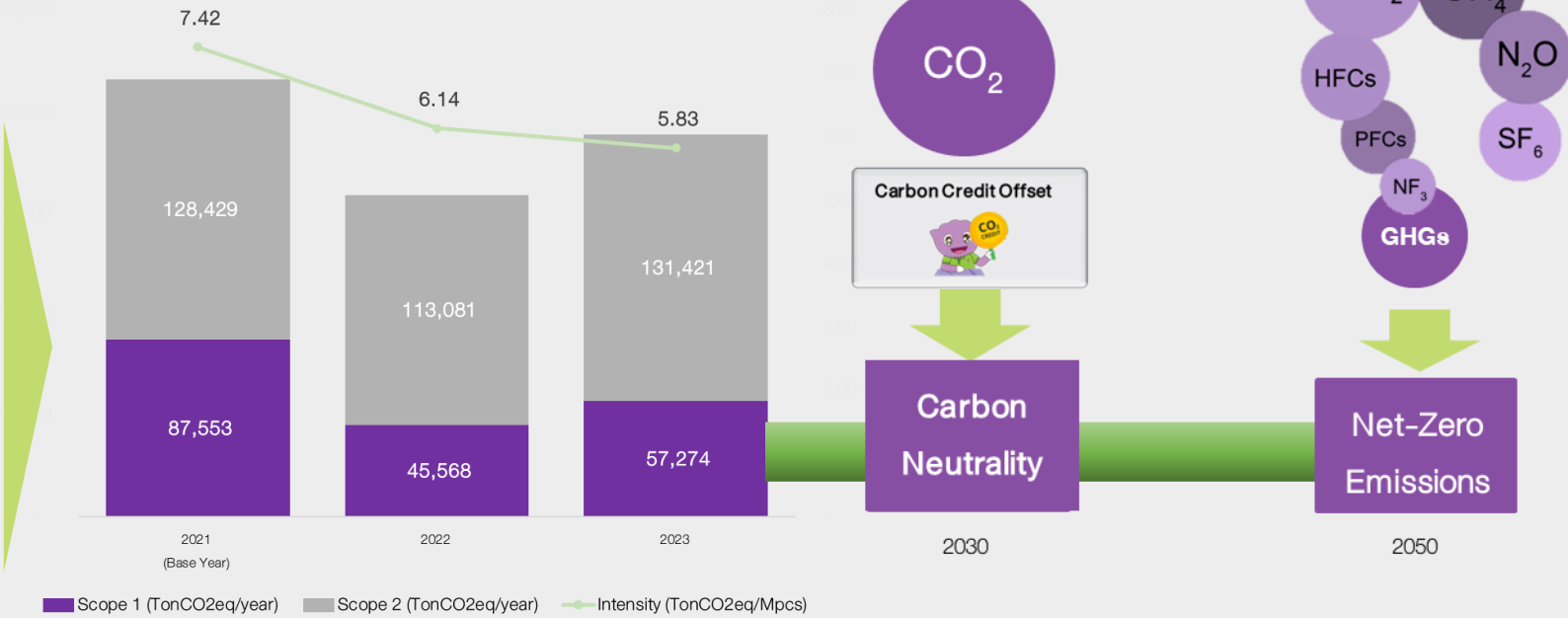
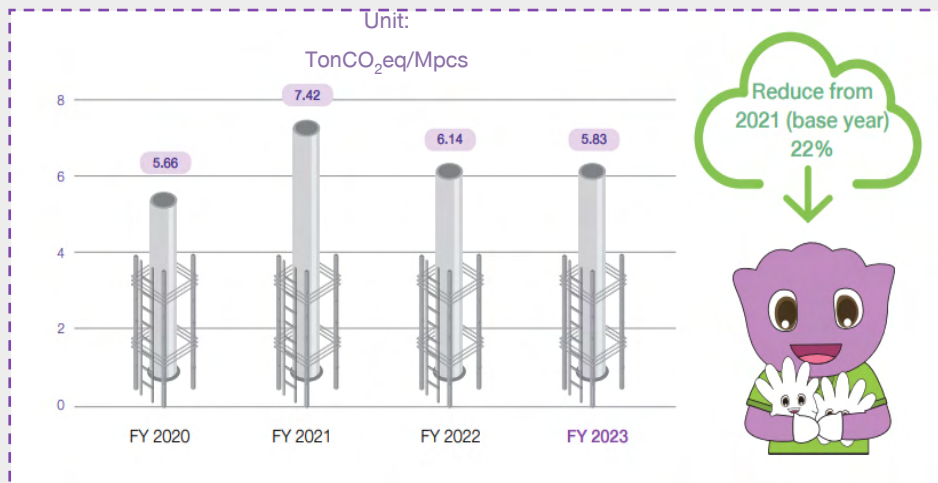
Target

Reducing greenhouse gas emissions per product unit by 40% within 2026 compared to 2021 (base year)

Carbon Neutral by 2030

Net Zero by 2050

Performance of Greenhouse Gas Emissions Intensity (Scope 1&2)



Climate Strategy

GHG Emissions (TonCO₂eq)

Efficiency Improvement (ເພີ່ມ)

Maximize energy efficiency in operations and reduce GHG from significant sources

- Biomass Renewable Energy
- Energy Efficiency Improvement

Breakthrough technology (ເປັດັຍ)

Low-carbon technologies and fuels acquisition e.g., renewable energy projects

Solar Project
(Solar Roof / Solar Floating / Solar Farm)

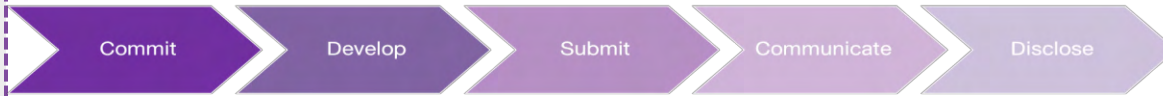
- EV Forklift
- EV Car

Sri Trang Carbon offsetting and absorption (ເກັບ)

Sri Trang Group Carbon Credit
T-VER plantation registration

- CARBON CREDIT
- CCS/CCUS
Carbon Capture, Utilization and Storage

The project to promote the setting of industrial sector greenhouse gas emission targets towards Net Zero using the SBTi



Complete and submit relevant commitment letter



Develop your target(s) in line with our science-based criteria



Submit your target for validation



Announce your target and inform your stakeholders



Disclose your progress

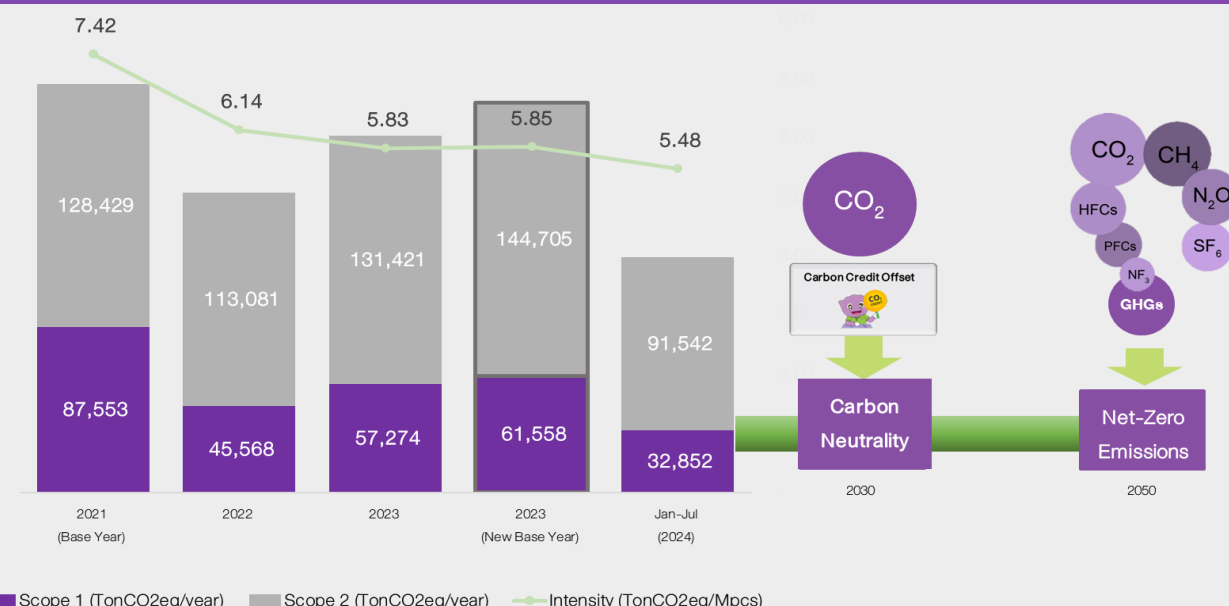


The CEO's announcement of commitment to achieve Net Zero on 06 June 2024

STGT is among the **top 19 leading companies** in Thailand was selected to participate in the project to promote the setting of greenhouse gas emission targets for the industrial sector towards Net Zero using the Science Based Target method (SBTi) from the Thailand Greenhouse Gas Management Organization (Public Organization) or TGO



Net Zero Pathway: New Target aligned with SBTi



Carbon Neutrality Roadmap

Target

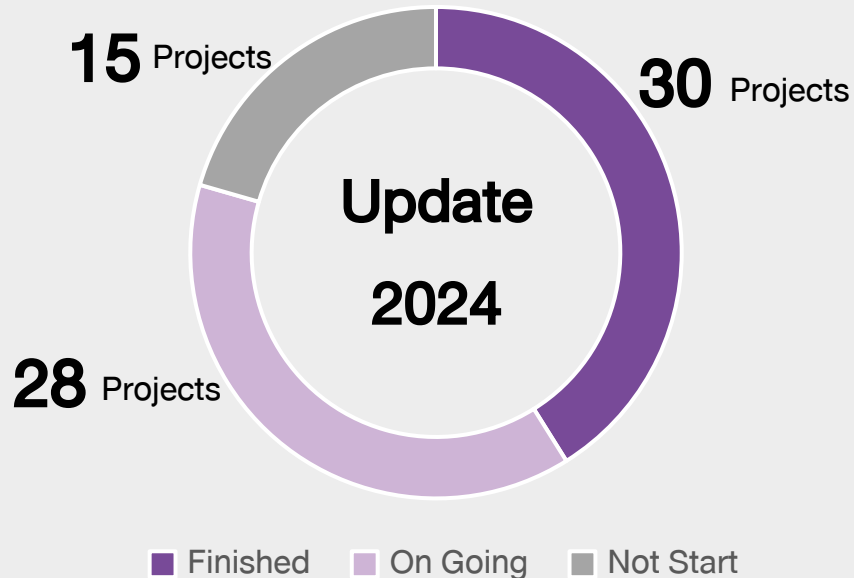
Reducing greenhouse gas emissions (Scope 1&2) per product unit by 25.93% within 2030 compared to 2023 (base year)

	Jan-Jul 2024 (Actual)	2024	2025	2026	2027	2028	2029	2030
Target	6.32%	3.70%	7.41%	11.11%	14.81%	18.52%	22.22%	25.93%
Scope 1								
Auto blow: 2								
EV Forklift: 12								
Scope 2								
Solar rooftop 2.997 MWp.								
Solar floating 6.762 MWp.								
Solar rooftop 2.200 MWp.								
Total Reduction (TonCO₂eq)								
		2,680	17,049	25,803	27,824	27,756	27,688	27,448
								Carbon Credit Offset
								Carbon Neutrality

Financing Climate Roadmap: Green Bond Projects



- **Enter** into new source of Funds
- **Enlarge** the fixed income investor base
- **Secure** cheaper source of finance compared to conventional bonds
- **Leverage** the green bond project to the next level of corporate ESG reputation
- **Promote** “Green Awareness Culture” throughout the organization

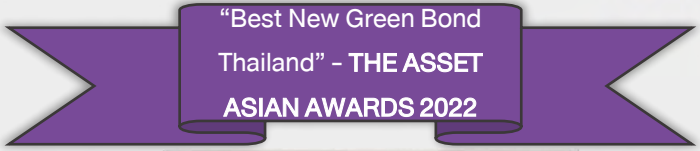


**Up to Date
Total Usage
of Fund**

THB 881 million

out of THB 1,500 million

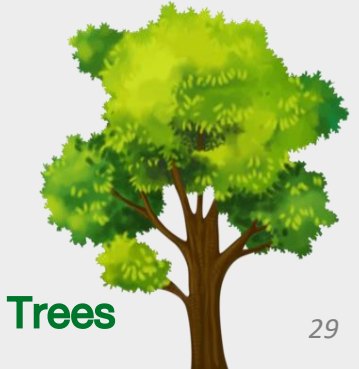
Remark: The information as of 24/06/2024



GHGs Emission Reduction

3,933 TonCO₂eq

Equivalent to the absorption of
GHG by perennial plant **393,344**



Agenda



1

Our Strategic Challenge

- Supply Chain Management
- Climate Change
- Labor and Human Rights



2

Appendix: Company Overview





Good Working Conditions

Focus on providing safe and fair working conditions for employees, including fair wages and diverse benefits and rights

Employee Support and Development

Encourage training and skills development to increase opportunities and career growth. It also encourages participation in decision-making to improve and develop work even further

Diversity, Equity, Inclusion (DEI)

Support diversity and respect differences in race, culture, gender, and age. Ensure a positive environment for all employees, including non-discrimination and the right to freedom of association

Community Engagement

Survey Impact, Support and participate in activities that benefit the community, such as career development programs, educational support, and participation in infrastructure development for better livelihoods.

The Company is committed to prioritizing social and labor management. Promote respect for human rights. Committed to creating Good Working Conditions for employees to work happily. It also emphasizes **Diversity, Equity, Inclusion (DEI)**, which we believe are fundamental to upholding human rights.

In addition, we pay attention to Employee Support and Development for stable growth along with the organization. Community engagement is one of the issues that the company has always focused and paid attention to. To build cooperation and strengthen together.



Community Survey

Community needs and expectations survey using QMS, EMS, OH&S systems

Evaluation of benefits and impacts on communities in CSR-DIW projects

Community opinion survey on the environment of communities surrounding the factory

Dialogue with the community



Totaling Investment
THB 1.95 million



Assistance for disaster victims and vulnerable groups
48 activities

Totaling
406 activities

Children and youths

Support food security



Support education and learning opportunities



Local arts, culture and traditions

Support for religious activities projects



Support community economy and tourism



Occupational development and living conditions

Develop skills and quality of life



Create jobs and careers



Environment

Join tree planting



create and develop an environmentally friendly industrial network



Good health and occupational health

Support medical gloves



Donate blood



Assistance to disaster victims and vulnerable groups

Donate beds made from field beds for patients in quarantine centers, suspected COVID-19 cases and those in isolation for COVID-19



Provide essential consumer goods





Social
Human Rights, Animal Welfare, and Responsibility & Sharing

STGT is the only one rubber glove company certified by the world's leading labor standards.



International Labour Organization Audit
Comprehensive system of instruments on work and social policy, backed by a supervisory system

STGT-HY	✓	STGT-PS	✓
STGT-SR	✓	STGT-CP	✓
STGT-TG	✓	STGT-ANV	□

*Planned for completion this year
be held in September 2024



Business Social Compliance Initiative
Supply Chain management system international labour standards protecting workers' rights

STGT-HY	A GRADE	STGT-PS	A GRADE
STGT-SR	A GRADE	STGT-CP	A GRADE
STGT-TG	A GRADE	STGT-ANV	□

*Planned for completion this year
be held in September 2024



Ethical Trade Audit
Ethical audit methodology which encompasses all aspects of responsible business practice.

STGT-HY	✓	STGT-PS	✓
STGT-SR	✓	STGT-CP	✓
STGT-TG	✓	STGT-ANV	□

*Planned for completion this year
be held in September 2024



Occupational Health and Safety in the Workplace
Standard of Occupational Health & Safety Management System

STGT-HY	✓	STGT-PS	✓
STGT-SR	✓	STGT-CP	✓
STGT-TG	✓	STGT-ANV	□

*Planned for completion this year
be held in October 2024

Human Rights and Non-Discrimination

No human rights risk
Employed **90** people with disability

Employees' Caring

Employee engagement
89%
(Target 85%)

Customers and Consumers Responsibility

Customer satisfaction score
Target **80%** Result **86%**





Q&A SESSION





**SRITRANGTM
GLOVES**

「THANK YOU VERY MUCH」

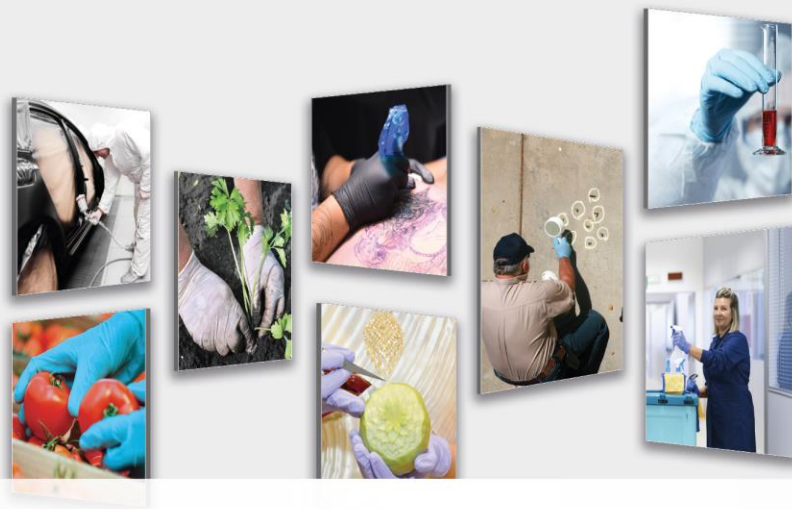
We offer

Sustainable life driven hand protection

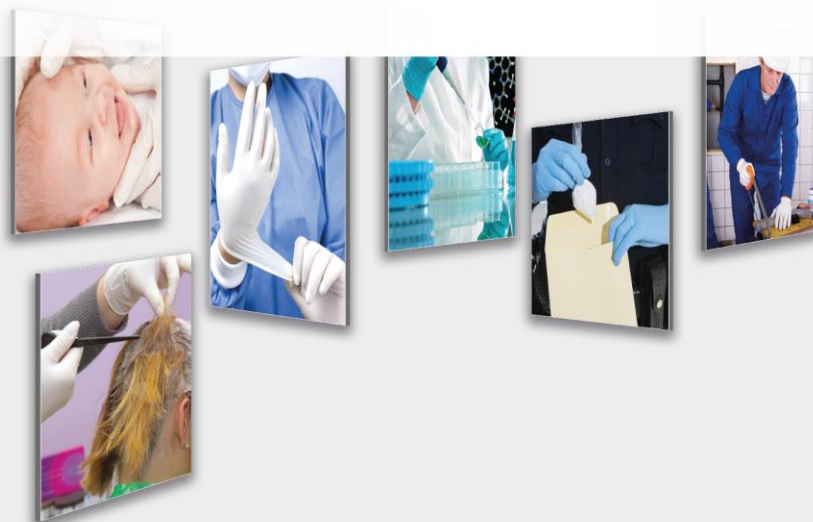


Follow us on:





APPENDIX



CORPORATE STRATEGY

Deliver Touch Of Life™
On a Global Scale

Mission: Sustainable Intelligence



Supply Chain Traceability



Carbon Footprint & Credit



Data Center



Artificial intelligence (AI)



Research & Development

Goal: Become the first of choice in Global Gloves Supply



Best Quality



Best Cost



Best Process



Best Service



Best Innovation



Best Sustainability



Best Culture



Best Performance

Core Values: Specialist Teamwork Accountability

Fully integrated *Fast Fact*



Up-Stream



Mid-Stream

PSE

Engineering Service



Down-Stream

Founded
1987
Dual listed
SET SGX

3.6
Million Tons
Total Rubber
Production
in 2023

World's Largest
Natural Rubber Company

7,200
Hectares
of Rubber
Plantation

19
Province
in Thailand

FSC FM
4,487
Hectares

24
Technically
Specified Rubber
Factories

Wood chip
Biomass
Energy

FSC coc

8
Concentrated
Latex
Factories

Wood chip
Biomass
Energy

FSC coc

3
Ripped
Smoked Sheet
Factories

Wood chip
Biomass
Energy

Founded
1989
Dual listed
SET SGX

50.8B
Billion Pcs Gloves
Production
in 2023

NO.1
MEDICAL GLOVES
PRODUCER

World's
TOP 2
Medical Gloves
Company

80%
Latex
13
Gloves
Production
Facilities
20%
Nitrile

Wood chip
Biomass
Energy

FSC coc

Export to
170+
Countries

EN 455

Health Canada

ISO 11163-1

ASTM

GB

JIS

STANDARDS NEW ZEALAND

BS EN ISO 13998



STARLIGHT EXPRESS

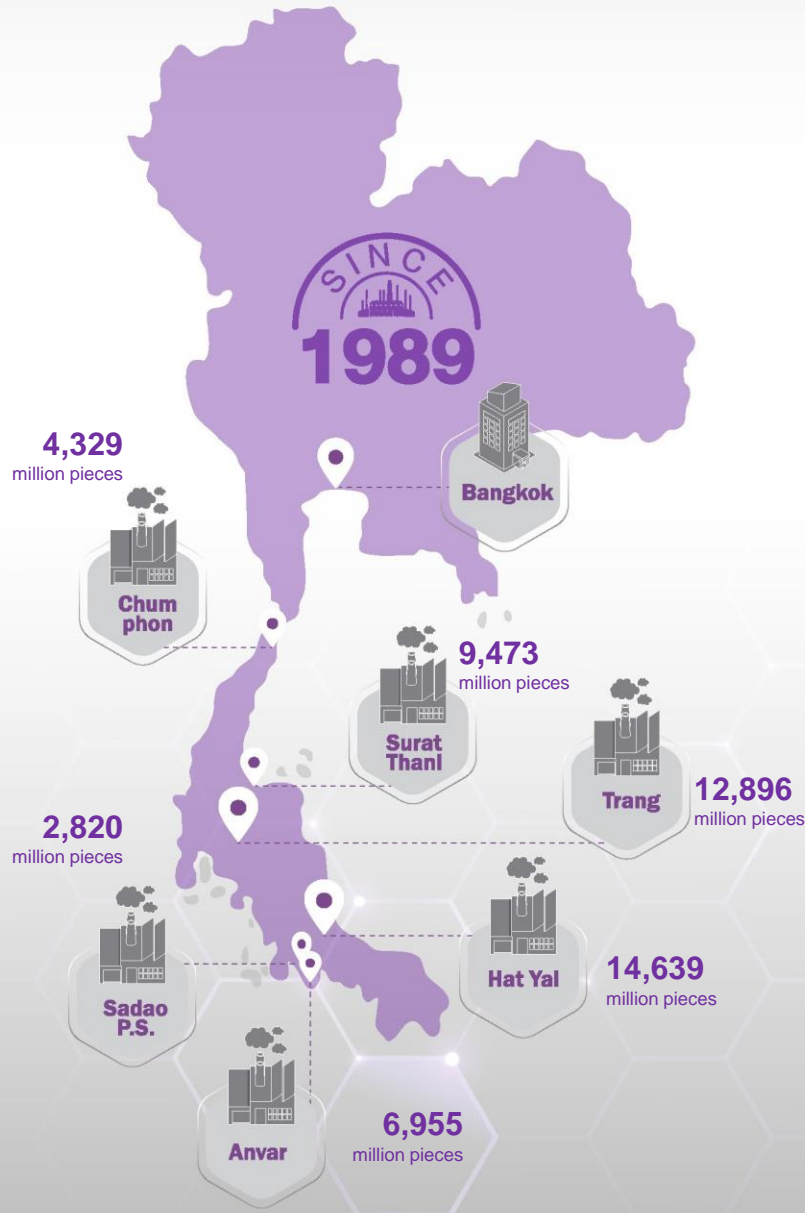
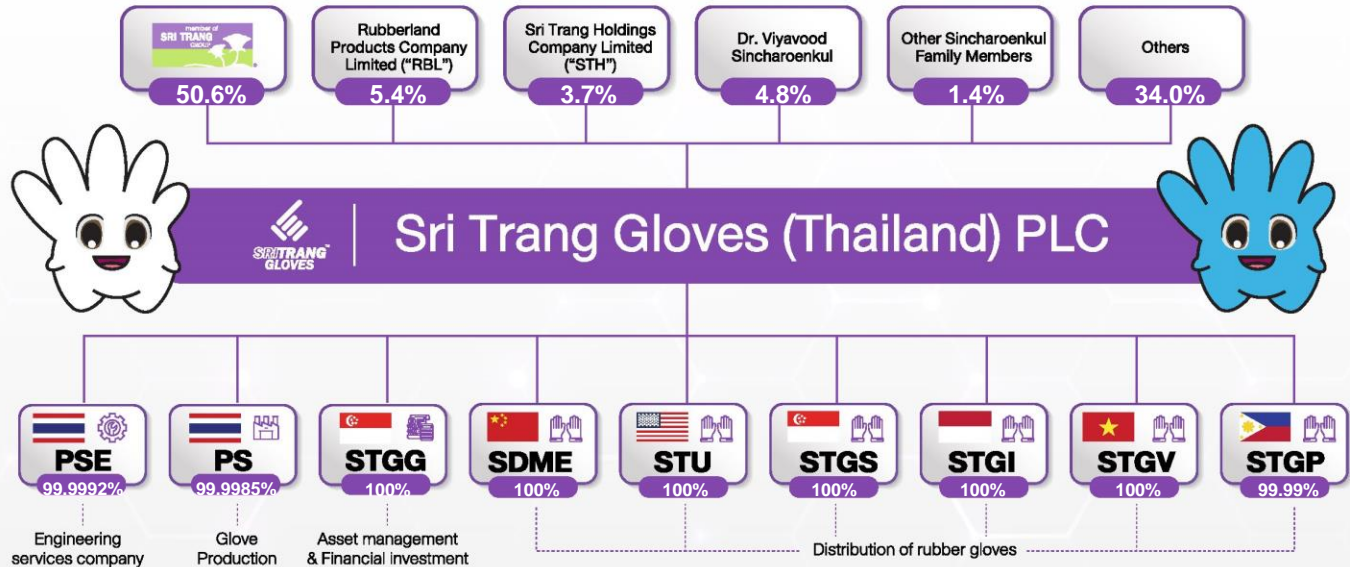
Data as of 31 December 2023

STGT At a Glance

STGT's annualized installed capacity approx. **51,112** million pieces per annum; marked as **the world's top 3** rubber gloves manufacturers



Shareholding Structure

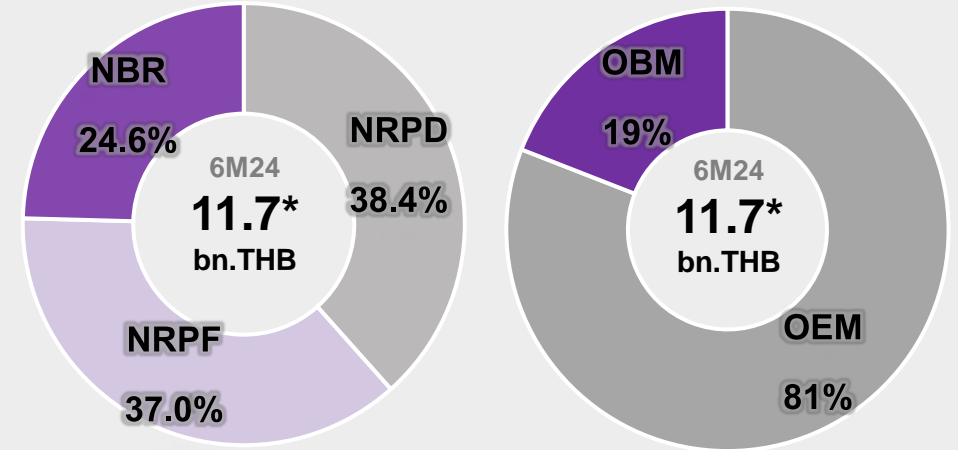


“The World’s Leading Sustainable Gloves Manufacturer”

Supply 71 Product Types Worldwide

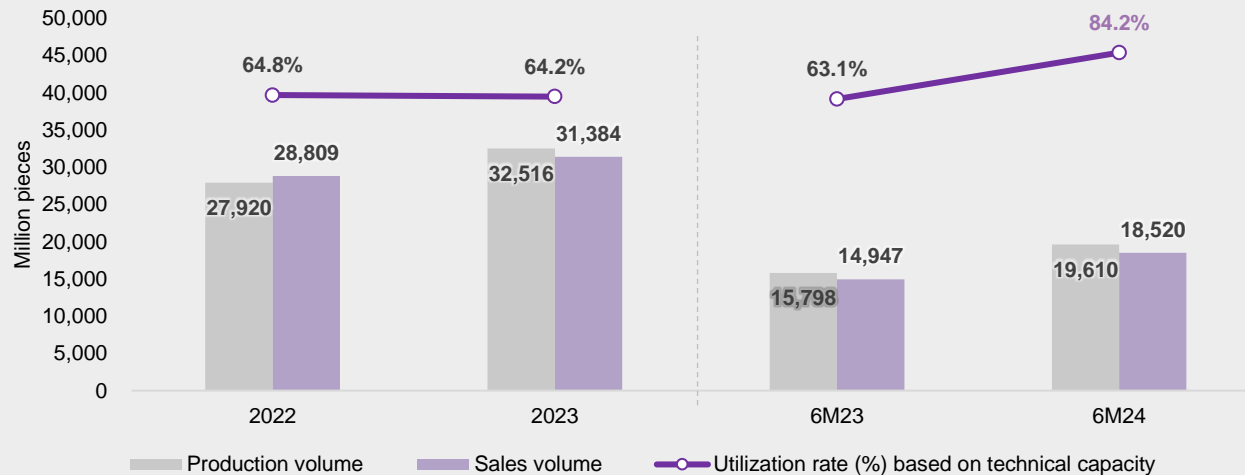


STGT's Product Mix by Gloves Sales

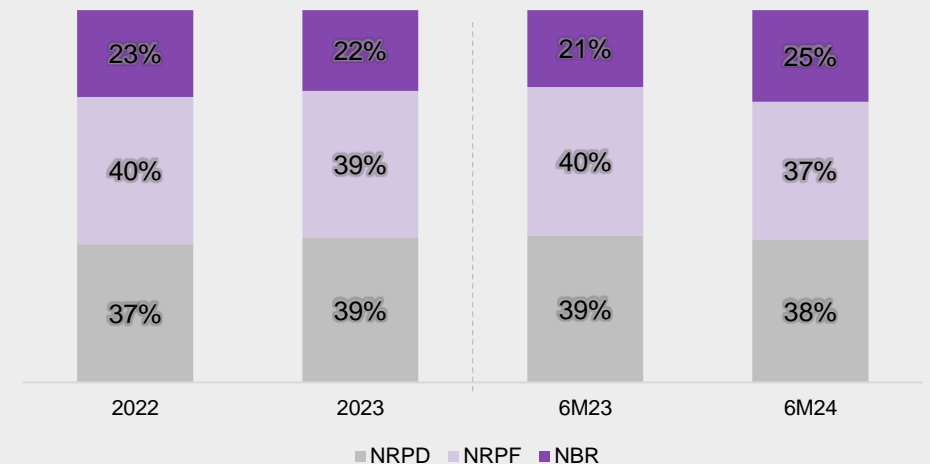


*Non-glove sales revenue is excluded of THB 118.1 million.

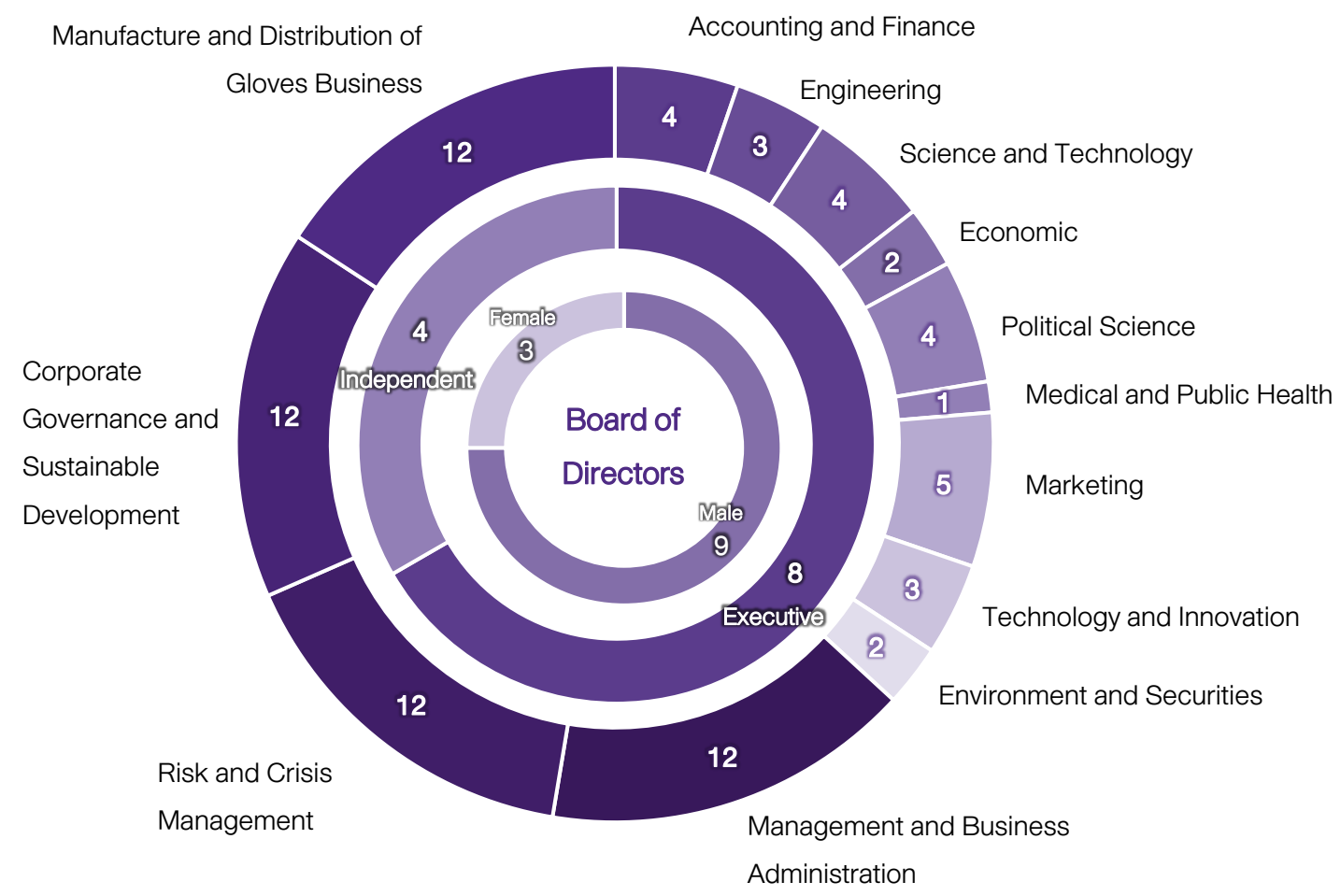
Sales Volume & Production



Product Mix Development

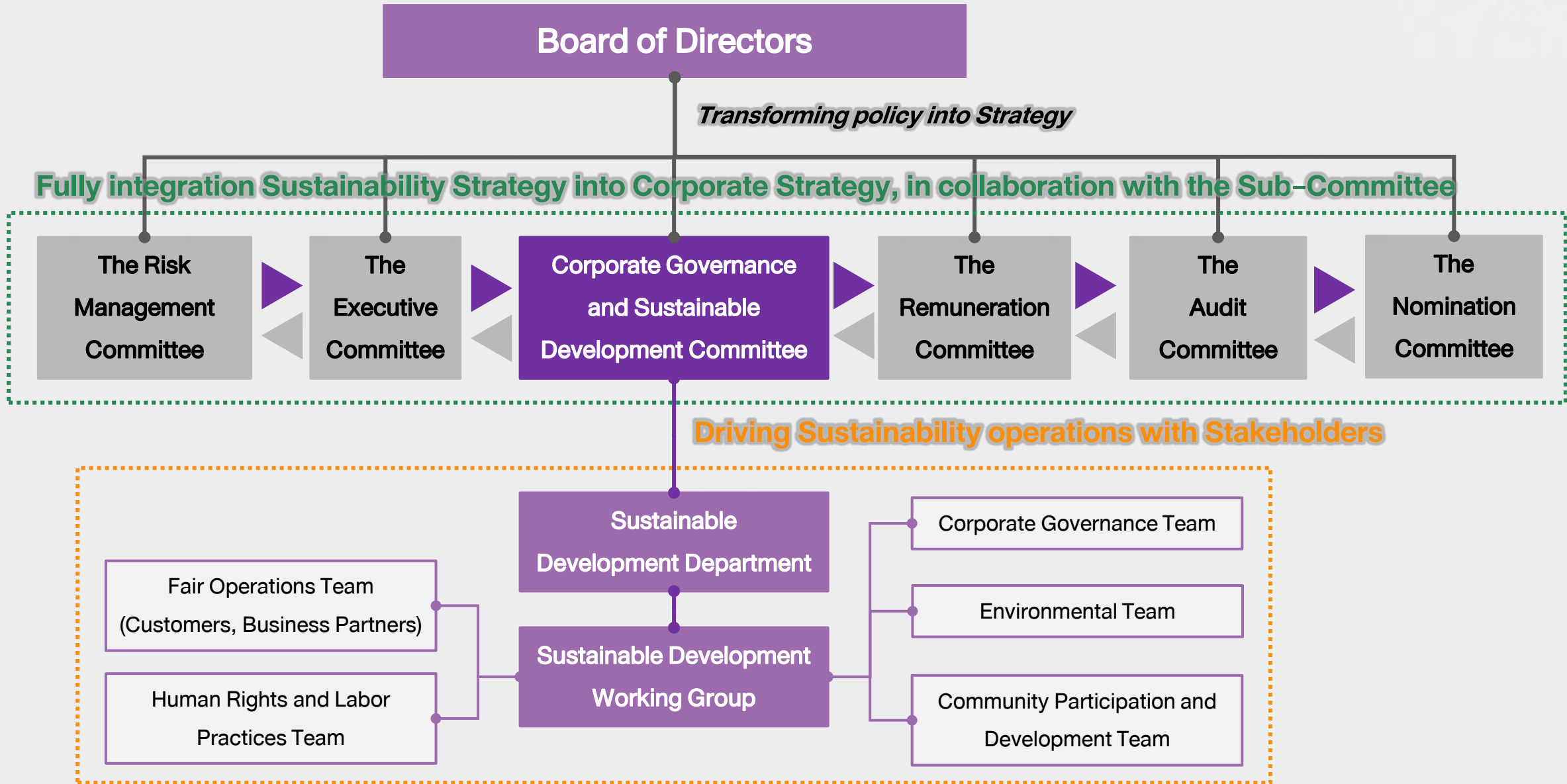


Diversity of Expertise



The Sub-Committees

- The Executive Committee
- The Risk Management Committee
- Corporate Governance and Sustainable Development Committee**
- The Remuneration Committee
- The Audit Committee
- The Nomination Committee



Together with STA, STGT is the only DLC in the stock exchange



Third Party Verification & Accreditation

E

- ISO 14001:2015 Environmental Management System (TUV SUD)
- Green Industry 4 (Green Industry 3)
- Environmental Good Governance Sustainable Business Certificate (Ministry of Industry)
- LESS, carbon network, Quality organization, XXX, T-VER

S

- International Labour Organization (ILO) International Labour Organization Audit
- Sedex Member SMETA Ethical Trade Audit
- amfori BSCI "A Grade"
- ISO 45001:2018 Occupational Health & Safety Management (TUV SUD)

G

- ISO 9001:2015 Quality Management System (TUV SUD)
- Forest Stewardship Council™ (Chain-of-Custody) (FSC)
- GMP (Good Manufacturing Practice) (Ministry of Health)
- ISO 22000:2005 Food Safety Management System Cover GMP+HACCP (bsi)
- Financial Report (EY)
- Sustainability Report (LRQA)

Comprehensive ESG Ratings

- CAC CERTIFIED** (2 stars)
- Excellent** Corporate Governance Score Appraised by Thai Institute of Directors
- SET 100 Index** (The Stock Exchange of Thailand)
- S&P Global**
 - SET AAA ESG Ratings 2023
 - Sustainability Yearbook Member 2024
 - Industry Mover 2024
- MSCI ESG RATINGS** (BBB)
- SUSTAINALYTICS** (a Morningstar company)
- REFINITIV**
- esgbook**
- Bloomberg**
- ESG100 2022** (Environmental • Social • Governance)
- FTSE Russell**



Sustainability CERTIFICATES & Awards Highlight

Awards



Net Zero aligned with SBTi
2024



Good Person, Earth Care Award
2024



Sustainability Yearbook and Industry Mover
S&P Global
2024



Highly Commended Sustainability Excellence
SET Award 2023



Business Partner Award
(Gold Award, Sustainability Award)
2023



Sustainability Disclosure Award
2022-2023



Sustainability Disclosure recognition
2021



CSR-DIW Award
2020-2023



CSR-DIW Continuous Award
2017-2023



Disability Employment Award
2017-2023



Sustainability Award for the Disability
2022



Outstanding Social Activity Award
2020



Green Industry Award (Level 4)
2021-2022



Environmental Governance Award
2019



Gold level plaque of honor waste water management
2019



**SRI TRANG
GLOVES**

「Touch Of Life™」

**450 hectare
of FSC land**

Sustainable Sourcing

- Free Market
- Human right & Welfare
- Code of Conduct Best Practise & Technique support
- 100% sourcing through digitalization & Farmtrace

Logistic Management

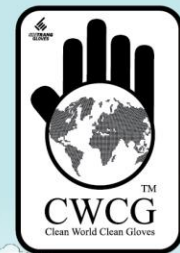
- Shorten Distances
- Reduce Fuel Consumption
- Reduce Chemical
- Reduce GHG emissions
- Locate in the heart of raw material

Environmentally Friendly Manufacturing

- Solar Rooftop
- 100% Renewable Energy in Gloves production
- Low Carbon Production
- Circular Economy and Waste to Value
- Water Reclamation system
- GHG Emission Intensity: **0.006** (tCO₂e/t, 1,000 pcs)
- Certified ISO 14001:2015 Environmental Management System

Human Dignity and Social Responsibility

- amfori
- BSCI
- Sedex
- SMETA
- ISO 45001:2018 Occupational Health & Safety Management



“Clean World Clean Gloves”

is Sri Trang Gloves brand promise of sustainable business operations which places the great importance on responsible operations and the manufacturing of high-quality and clean glove products.

Clean Optimization

- Certified ISO 13485:2016 Medical Device Quality Management System
- Certified ISO 22000 Food Safety Management System
- NON DETECTABLE PROTEIN
- Quantity of 4 Principal Allergenic Proteins
- 11 Chemotherapy Drugs

Clean Natural product

- Renewable
- Biodegradable
- Carbon absorbable Raw material
- Low Carbon Footprint

Rubber Trees's Carbon Absorption rate
26.375 tons Per Hectare/Year
47.4kg Per Tree/Year

Green Protection
Cleaner Planet